



Bud Industries, Inc.

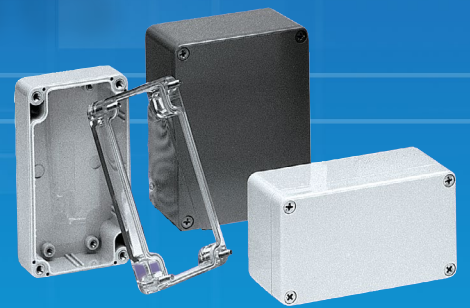
SHORT FORM CATALOG

Electronic Enclosures

Racks

Cabinets

Accessories



From steel to aluminum, plastic to fiberglass, the Bud line of enclosures and racks is the most extensive and often the most affordable.

***More than 2300 enclosures
available for same-day shipping.***

Enclosures Right Now, Right Price.

440-946-3200 • www.budind.com



Large Cabinet Racks

See more styles at www.budind.com/cab-rack

Each rack family has its own unique visuals and included accessories. From the basic Valurack to the fully loaded Professional series, all are value priced and provide a turnkey solution to your 19-inch equipment mounting needs.

Series: Bud Rack Professional (BRP), Economizer (ER), 60 Series, 2000 Series, Valurack (VR)

Sizes: 12U (21") to 45U (78.75") panel height, 20.5"–29.5" clear inside depth, all 19-inch panel width

Material: Welded steel

Features: A variety of styles of welded 19-inch equipment cabinets, complete with sides, tops and doors. All feature at least one pair of panel mounting rails and come completely assembled. The Professional includes many extra features such as ventilated tempered glass front door, a fan box with fans installed, a ventilated shelf and casters...all at no additional cost.



See video on Cabinet Racks.

<http://bit.ly/BudCab-Racks>



Server Racks

See more styles at www.budind.com/server

This series offers the most features for the lowest price in the industry. With high style looks, solid construction, and a low price, it is the perfect unit for any server need.

Series: Bud Server Rack Professional Series (SRP)

Sizes: Six sizes available: 27U (47.25"), 42U (73.5") and 45U (78.75") panel height, each 28" or 36" deep.

Materials: Welded steel

Features: Each comes with significant accessories, including ventilated front door and split rear doors, a multi-fan box with installed fans, four panel mounting rails, ventilated shelves, cable management brackets and casters.



See video on Server Racks.

<http://bit.ly/BudServer>



Communication Racks and Cabinets

See more styles at www.budind.com/comm

Bud offers a broad line of products targeted at the communications market with our goal to make the install process rapid and simple. As more than 90% of all Bud products are in stock, we can meet your rush requirements with same-day shipping.

Series: Mega Network (MNC), Universal Network (UNC), 19/23" Cabinets (DC), Double Rack (DR), Turnkey Cabinet Rack (DC), and Cable Management Systems

Sizes: Varies by product

Materials: Steel and aluminum

Features: The products range from cabinets that offer unique fiber interfaces to traditional open cabinets. The significant advantage is that they provide cable management support and may include extra accessories at no additional charge.

Enclosures *Right Now, Right Price.*



Cabinets

See more styles at www.budind.com/cabinets

For small-space requirements where a large cabinet rack would take up too much space, these cabinets are perfect for bench-top or wall-mount controllers and electronic systems.

Series: Emperor (WM), Visioncab (VC), Classic II (AGC), Econocab (EC)

Sizes: 4U (7") to 27U (51.43") panel height, 14.5" to 23.62" clear inside depth

Materials: Steel

Features: All accept 19-inch panels. They vary in features from the basic (integrated mounting rails) to much more complete (included shelves, fans and tempered glass doors). The Visioncab has two versions, one with solid rear panel, the other that wall mounts. The Emperor will also wall mount.



Open Racks

See more styles at www.budind.com/open

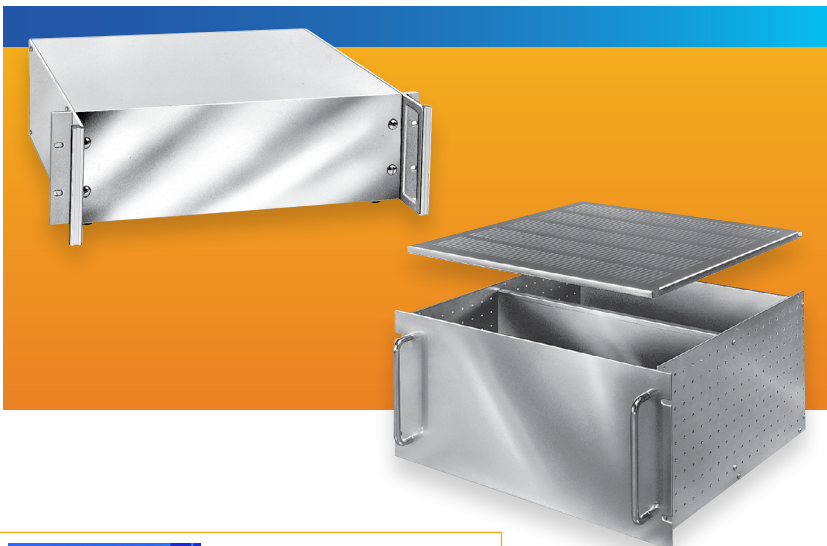
The broadest range of open racks can be used in any environment from computer rooms to test labs. Wall-mount capabilities are available to allow for equipment to be raised from the floor.

Series: Aluminum Relay Rack (ARR), Wall Mount Relay Rack (WRR), Swing Frame (SF), Heavy Duty Steel (RR), RR Series, Table Top (RR)

Sizes: 12U (21") to 44U (77") panel space

Materials: Steel or extruded aluminum

Features: All accept 19-inch panel mount equipment. Lightweight aluminum extrusion is perfect for large installations while steel provides lower cost durability. Swing frame allows for easy installation in a wall-mount situation. All sizes include required hardware as well as extra hardware for equipment mounting.



Rack Mountable Chassis

See more styles at www.budind.com/chassis

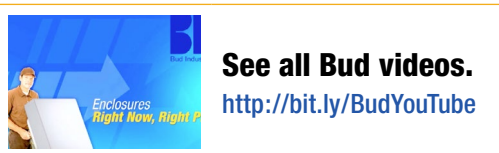
Three different approaches to protecting modules and boards in a rack mount situation with flexibility and high quality.

Series: Valuline (HC), Rack Mount Chassis (RM), Rack Mount Box (PRM)

Sizes: 1U (1.75") to 8U (14"), 8" to 22" deep

Materials: Aluminum, ABS plastic

Features: The Rack Mount Chassis Series allows the engineer to customize the product with optional tops and bottoms. The Valuline Series offers a complete unit that includes top, sides and rear panel. Both offer surface-shielded front panels to protect the surface during layout and drilling. The Plastic Rack Mount Box is a low-cost, lightweight solution to PC and module mounting.



See all Bud videos.

<http://bit.ly/BudYouTube>

Enclosures Right Now, Right Price.

440-946-3200 • www.budind.com

Plastic Boxes

See more styles at www.budind.com/plastic

Plastic provides versatility and attractive visuals for your designs. With hundreds of styles and sizes to choose from, Bud has a plastic enclosure available to meet even the most exacting standards.

Series: Grabbers (HH), DIN Rail Mount Boxes (DB, DPB, DMB), Plasticase (PC), PI Series, Plastibox (PS, PT), HP, Utilibox (CU, CUR), and Potting Box (PB), Plastic Instrument Cases (IP), USB Enclosures (USB), Power plug (PPB)

Sizes: 2.1" × 1.3" × .58" to 9.5" × 6.3" × 1.5"

Materials: ABS plastic; ratings include UL94V-0, UL94-5VA, UL94-HB

Features: Bud has an incredibly broad range of plastic products. These can range from small potting boxes and USB enclosures to units with removable front and rear panels, and units with slots for boards or chassis. Bud offers different shapes and configurations from rectangular to sloping to round, some with cut outs for readout, terminal installation, or cable input.



See video on DIN Rail Boxes.

<http://bit.ly/BudDIN>



See video on Handheld Plastic Boxes.

<http://bit.ly/BudPlastic>

NEMA Enclosures - Plastic

See more styles at www.budind.com/NEMAPlastic

Our plastic NEMA line features some of our better selling enclosures that provide superior moisture protection for sensitive electronics. These series offer a variety of options, including different materials and see-through ability. The different versions also give you the choice of a hinged or screw-down cover. These enclosures are a cost-effective way to house internal components.

Series: NBA, NBB, NBC, NBD, NBF, NBE, PN, PNR, BT, TBG, HD

Sizes: 2.56" × 2.28" × 1.38" to 27.55" × 19.68" × 9.84"

Material: ABS and polycarbonate plastic

Features: NEMA 1, 2, 4, 4X, 12, and 13 protection with varying types of latching mechanisms. These boxes also come with clear (-C) or opaque covers. The BT series offers the first completely transparent NEMA 4X enclosure in the industry. PN Series offered with and without mounting brackets.



See video on Polycarbonate NEMA Boxes.

<http://bit.ly/BudNEMAPlastic>

Metal Boxes

See more styles at www.budind.com/metal

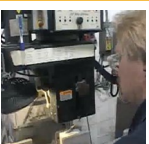
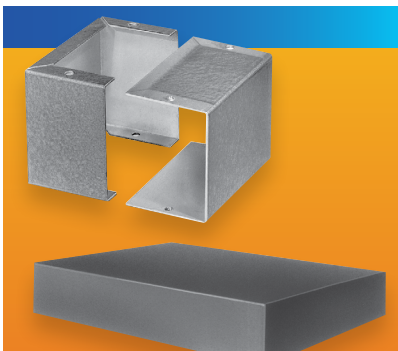
With a majority of these products being made out of .04" aluminum, it offers a low cost alternative to house your electronic components in screw-together small utility boxes, sloped enclosures, and aluminum chassis.

Series: Aluminum Chassis (AC), Utility Cabinets (AU, CU), Mini-boxes (CU), Showcase (BB), Contour Utility and Converta Box (CU), Champion (CS), Extruded Aluminum (EX), Keyboard (KB), Futura Boxes (MD), Shadow Cabinets (SB), Slope/Compucab (SC), Transi-cases (TC), Instrument (TR), Portacabs (WA)

Sizes: 2.75" × 2.12" × 1.62" to 17" × 17" × 4" and 11" × 11" × 18"

Material: Our parts are made of various types of metal, including .04" aluminum, .05" aluminum, 20 ga. steel, extruded aluminum, and #ADC-12 aluminum alloy.

Features: The AC Series is an aluminum chassis series in a natural finish. The AU and CU Series boxes are simple cabinets that have screw-down covers or bases. The EX Series offers a low-cost extruded aluminum enclosure as an alternative to fabricated aluminum or die-cast boxes. The BB showcase and TR case styles are great for portable instrumentation.



See video on Custom Modifications.

<http://bit.ly/BudMods>

Enclosures *Right Now, Right Price.*

440-946-3200 • www.budind.com



NEMA Enclosures – Fiberglass

See more styles at www.budind.com/fiber

Our fiberglass line offers low-cost chemical-resistant protection to be used in all types of industrial applications. These are used in washdown environments, terminal wiring applications, control housings, and junction box applications.

Series: NF, NFL, PIP, PTQ

Sizes: 5.1" × 3.1" × 3.1" to 24.8" × 20.8" × 10"

Material: Fiberglass reinforced plastic (SMC), polycarbonate resin 10% fiber filled

Features: NEMA 1, 2, 4, 4X, 12, and 13 protection. The NF Series uses two captive stainless-steel screws to lock. The NFL has a quick-release stainless steel latch. Both have a hinged cover and a light gray finish and include a removable 14 ga. powder-coated steel inner panel. PIP and PTQ are IP67 submersible rated.



See video on Fiberglass Enclosures.

<http://bit.ly/BudFiber>



NEMA Enclosures - Sheet Metal

See more styles at www.budind.com/NEMAmetal

These NEMA enclosures are ideal for a wide variety of applications ranging from industrial equipment to medical devices. Options include a choice of stainless steel for harsh environments.

Series: Steel NEMA Boxes (SN, SNB, SNC), stainless-steel NEMA Boxes (SNB-SS), Push Button Boxes (SPB), Junction Boxes (JB)

Sizes: Steel NEMA Series: 6" × 4" × 3" to 24" × 24" × 10"
Push Button Boxes: 3.5" × 2.5" × 2.75" to 10.25" × 3.25" × 2.75"
Junction Boxes: 4" × 4" × 3" to 10" × 10" × 6"

Material: 14 ga. steel (SN, SPB), 16 ga. steel (JB, SNB, SNC), 304 stainless steel (SNB-SS)

Features: The SN, SNB, and SNC offer NEMA 1, 2, 4, 4X, 12, and 13 protection. These series offer various locking mechanisms from clamps (SN) to unique tool lock (SNB) to screw down cover (SNC). SN, SNB, and SNC have bonding studs and wall mounting provisions. The Junction Box is offered in a NEMA 1 protection and comes with and without knockouts. The Pushbutton Boxes have one to four holes and are designed to meet NEMA 12 and 13 ratings.



See video on Stainless Steel Enclosures.

<http://bit.ly/BudStainless>



See video on SNB and SNC NEMA Enclosures.

<http://bit.ly/BudSNB-SNC>



See video on SN Series Enclosures.

<http://bit.ly/BudSNSeries>

Enclosures Right Now, Right Price.

440-946-3200 • www.budind.com

NEMA Enclosures - Die-Cast

See more styles at www.budind.com/NEMAalum

These boxes offer NEMA 1, 2, 4, 4X, 12, and 13 protection and give electronics superior protection from atmospheric and marine corrosion. Some even meet IP67 submersible ratings. Options for Bud's line of aluminum NEMA 4 enclosures include mounting brackets, hinged covers, and EMI/RFI shielding. They are offered with a natural finish or powder coated.

Series: AN, CN, ANS, IPS

Sizes: 3.54" x 1.42" x 1.18" to 9.85" x 9.85" x 4.01"

Material: ADC-12 die-cast aluminum alloy

Features: Covers incorporate a recessed gasket on AN and CN enclosures. The AN Series offers mounting bosses and card guides while the CN offers only card guides. The ANS Series provides NEMA and EMI/RFI shielding.



See video on IP67 Enclosures.

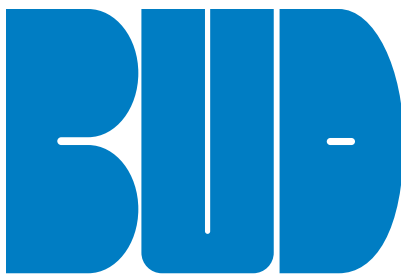
<http://bit.ly/BudIP67>

Accessories

See more styles at www.budind.com/acces

Bud offers a full line of accessories for 19-inch racks and electronics cabinets, including everything you need to keep your rack equipment cool, organized and easy to access. Accessories include brackets, cable organizers, fans, fan trays, shelving, feet, casters, handles and more.

Series: Fan Trays (FT), Temperature Controls (TS), Slides (AS), Panel Mounting Rails (PMR), Cable Management (CM), Shelves (SA and SH), Power Outlet Strips (POS), Panels (PA and SFA), Casters (RC), and Handles (H).



Bud Industries, Inc.

BUD INDUSTRIES INC.
4605 East 355th Street
Willoughby, OH 44094
Phone: 440-946-3200 x2
Fax: 440-951-4015
E-Mail: saleseast@budind.com

BUD WEST
Phoenix, AZ 85021
Phone: 440-946-3200 x2
Fax: 602-870-8477
E-Mail: saleswest@budind.com

At Bud, Custom Enclosures Are Standard

Complete Design Support

Let our experts help you develop the most cost-effective solution to your special design needs. Download drawings from our webpage to modify, and then email them back to us at saleseast@budind.com.

Creating Unique Designs to Meet Your Specific Needs

Our state-of-the-art production means low tooling costs and rapid production of custom products with the ability to modify dimensions or colors on any of our standard products.

Modifying a Standard Product

Modifications include adding holes, slots and other cutouts for rapid installation of your equipment.

Mounting Accessories to Provide Turnkey Solutions

We speed your installation process by adding shelves, power outlet strips, fans or any accessory at the factory.



See video on Custom Enclosures.

<http://bit.ly/BudCustom>

Enclosures *Right Now, Right Price.*

440-946-3200 • www.budind.com